

ALEXANDRE GALLERY

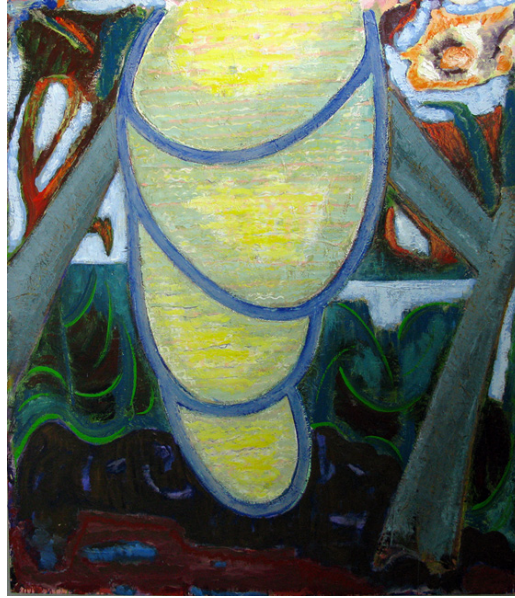
September 1, 2016

Gregory Amenoff: NEW PAINTINGS

September 15 – October 29, 2016

Reception for the Artist Thursday, September 15 from 6:00 to 7:30 pm

Catalogue available with text by Stephen Westfall



Gregory Amenoff, *Clearing (for JB)*, 2016, oil on canvas, 72 x 62 inches

The gallery is pleased to announce the exhibition ***Gregory Amenoff: NEW PAINTINGS***, which opens on September 15th with a reception for the artist from 6:00 to 7:30 that evening.

Marking the gallery's fifth solo show of the artist's work since 2007, these new paintings continue Amenoff's exploration of the territories of one's imagination and the landscape of the physical and spiritual world that we all inhabit. Celestial light and windows into other spaces combine with the gritty physicality of the earth and natural forms. Using a semi-abstract language informed by the early American modernists, direct observation of nature and dialogue with his contemporaries, Amenoff captures the sublime feeling of awe before nature that is uniquely his own expression. Amenoff has said of these newest paintings that he hopes they are "charged with a new and more personal sense of mortality, longing and hope."

Writing for the accompanying catalogue, Amenoff's contemporary the painter Stephen Westfall observes:

Amenoff's paintings shiver and swim with light and illumination rippling across and through impasto surfaces that can seem both massively thick and elastically supple. There is an animist streak in both the shapes of his forms and the viscosity of his paint, his forms can seem to surge and swell with intentionality. There are openings to other spaces, bathed in light or cloaked in darkness, but the spatial illusion in his paintings is fused to a sense that the entire picture surface is leaning up against the picture plane, pushing into our world rather than receding away from it.

The exhibition includes four large-scale paintings (with sizes up to 72 x 62 inches), five medium sized paintings and a group of smaller works. Titles include: *Dreamer (for GG)*, *Flood*, *Grotte (for Courbet)*, *Pink Moon* and *Tower for Strindberg*.

Gregory Amenoff (American, b. 1948) came onto the scene in the 1980s when his work was included in two Whitney Biennials. He is the recipient of numerous awards from organizations including the American Academy of Arts and Letters, National Endowment for the Arts and New York State Council on the Arts. In 2011 he was awarded a fellowship from the Simon Guggenheim Foundation. His work has been the subject of over 50 one-person exhibitions. He is a founding board member of the CUE Art Foundation and is the Eve and Herman Gelman Professor of Art at Columbia University where he has served as Chair of the Visual Arts Division.

Alexandre Gallery (Alexandre Fine Art Inc.) is located at 724 Fifth Avenue, 4th Floor, at 57th Street. Founded in 1996, the gallery specializes in early twentieth century American art, with a particular focus on the Stieglitz Group, and represents a select group of contemporary artists. Regular gallery hours are Tuesdays through Fridays from 10:00 to 5:30, and Saturdays from 11:00 to 5:00.

For further information or images, please contact the gallery at 212-755-2828 or at inquiries@alexandregallery.com.